

# SUSHAN VOHRA


ANSWERS OUR 16 QUESTIONS

印度工业设计师

苏珊·沃拉

酷爱诺贝设计师专访

design casters

脚轮设计——设计师脚轮 

5

**KOO 100 Y KOOEVO 75**  
IDEAL FOR HEAVY FURNITURE  
家具重型脚轮  
酷100 & 酷75-2

**KOO75 Y KOO65**  
WHEELS FOR OFFICE  
安上酷75 & 酷65  
齐享办公新时尚

INSPIRATION TO USE  
THE KOO FAMILY  
炫酷5大原因



# WELCOME TO THE MOVEMENT

We will show you our product's lifestyles, we will detail in an article all their values and we will convey great ideas to decorate your spaces, we will also share with you an interview with a designer from every place in the world every month. We will become a design community. Do you join the Robby community?

一起来，转出生活新精彩！~

也许你一直没发现，但诺贝的产品却一直与你的生活同在。这一期诺贝杂志的内容，对你的冲击可不止眼球，还有你的灵感思维，当你还在烦恼空间装饰的时候，我们创新大胆的想法已猛烈来袭，我们还会每期与你分享来自世界各地的设计师所接受诺贝的专访。亲，你就别犹豫、别怀疑了，这里就是设计时尚的潮流尖端，让我们一起来转出生活新精彩吧！

Raymond Pan  
General Manager

Christine Pan  
Sales Manager



诺贝——家具脚轮设计与制造的领先者

## We manufacture and design wheels for furniture



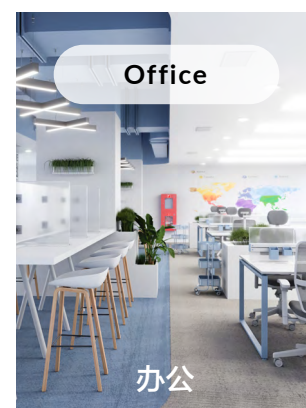
Airport

机场



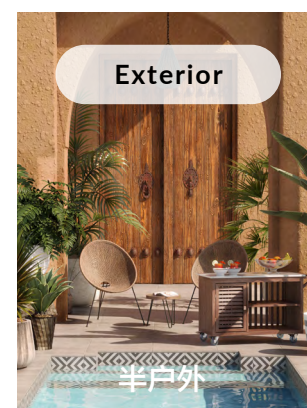
Home

家居



Office

办公



Exterior

半户外

Discover all the sectors that embrace our wheels.  
We customize the wheel upon request.  
发现更多诺贝脚轮足迹  
脚轮也可定制

All filters

Koo Family

筛选

炫“酷”一族



**KOO 100**

Heavy furniture size.

page 4

★★★★★

酷100mm  
重型家具脚轮 第4页



**KOO 75 EVO**

Koo family casters evolution.

page 6

★★★★★

酷75mm -2代  
酷75的进阶 第6页



**KOO 75**

Fashion stores choice.

page 12

★★★★★

酷75mm  
展现时尚 第12页



**KOO 65**

All chairs want to have them.

page 14

★★★★★

酷65mm  
办公椅梦寐以求的脚轮 第14页



**KOO 60**

Smooth and sophisticated design.

page 16

★★★★★

酷60mm  
精致流畅设计 第16页



## 5 inspiration to use the Koo Family

page 10

炫酷有因  
5大原因向你炫酷  
第10页



诺贝设计师专访  
苏珊·沃拉用16个答复  
来展现对工业设计的酷爱  
第8页

**16 Sushan Vohran answers**

page 8





Front View  
正视图



Unlock  
解刹



Lock  
启动刹车



**KOO 100** 酷100mm  
AVAILABLE COLOURS 常规颜色



**CHARACTERISTICS** **Material:** Chassis made of Zamak and polyurethane Shore 95° tread. Two bearings for continuous and smooth movement. Silent, don't mark the floor. **Couplings:** M12x20 metric pin.

**技术数据 材料：**锌合金支架，95° PU包边，内含精密轴承，享受静音转动

配件：丝头M12X20mm

**测试标准:** EN12528 / EN12531 / Clause 16 of ANSI/BIFMA X5.1-2017

Diameter 直径	100mm	Load 动态承重	150kg
Width 轮宽	61 mm	Shore 包边硬度	95°
High 总高	117mm	Brake 可选刹车	Yes

Concept by José Vinaroz, creative by Robby team 2021

何塞·维纳罗斯概念，诺贝团队2021年创造



## KOO 100

If you have a sturdy piece of furniture full of heavy objects and you want to give it a movement to turn it into a practical and easy-to-move piece of furniture but you don't want to put the typical industrial wheels on it that do not fit aesthetically with your environment, we have the perfect solution. We have designed within the Koo Family, the Koo 100 model, a design wheel that stands out for its high load capacity while maintaining the design and functionality of the KooEvo 75.

It is available in different colors and with an optional resistant foot brake system and reliable, it also has different couplings to suit your needs.

*Heavy furniture with design wheels, hard to believe but real.*

## 酷100mm

想重型设计款家具便于移动  
却找不到时尚及实用的脚轮？  
蓦然回首遇见炫酷一族的“酷100”

中空的设计，弧形的线条  
时尚的外观下是令人意想不到的承重  
看似普通的刹车制手  
不仅符合人体工程学设计  
还能通过小孔图标清晰知道刹车与否

酷100mm  
难以置信却又真实存在







Front view  
正视图



More info  
微信扫一扫  
了解此款脚轮更多资讯



## KOO EVO 75 酷75mm-2代

AVAILABLE COLOURS 常规颜色



**CHARACTERISTICS** **Material:** Chassis made of Zamak and polyurethane Shore 95° tread. Two bearings for continuous and smooth movement. Silent, don't mark the floor. **Couplings:** 47x47 plate, 11x22 pin, M8x15 and M10x15 metric pin. Silence system.

**技术数据** **材料:** 锌合金支架, 95° PU包边, 内含精密轴承, 享受静音转动

**配件:** 平底47X47mm、插杆φ11X22mm、丝头M8X15mm或M10X15mm.

**测试标准:** EN12528 / Clause 16 of ANSI/BIFMA X5.1-2017

|Diameter 直径 75mm

|Width 轮宽 47mm

|High 总高 90mm

|Load 动态承重 85kg

|Shore 包边硬度 95°

|Brake 可选刹车 Yes

Concept by José Vinaroz, creative by Robby team 2016

何塞·维纳罗斯概念, 诺贝团队2016年创造



## KOO EVO 75

When we buy a house or reform it, there is a lot of work to do and many decisions to make. Having the possibility of choosing each object that will be part of our environment and that includes both the color of the walls and whether our furniture will have wheels.

If you have chosen to put wheels on it and you are one of those who look for quality and style in every detail, Koo Evo is always a good option, due to its design, elegance, and perfect operation..

*Design is in the details and there are our wheels*

## 酷75-2

家居装饰, 细节营造  
首选”酷75-2”  
时尚、高质、优雅

设计流露于细节中  
这就是我们的脚轮



HOME  
家居





# SUSHANT VOHRA, INDIA

Industrial Designer, defines himself as a problem solver, flexible, quick to pick up new skills and eager to learn from others. With experience in different fields of design in companies such as Astro Studios (USA), Steelcase (Hong Kong), KISKA GmbH (Austria) and Godrej (India).

**When designing, what superpower would you like to have?**  
Most designers rely heavily on intuition with a combination of facts and user studies to come up with solutions for the future. I'd like to have control over my intuition and the ability to imagine things with guaranteed success rate. Basically a spidy-sense for the future.

**What if you had to design an object to put wheels what would it be?**I am a musician and I have seen my drummer friends always struggle to pack and unpack their gear. It may be nice for a drumset to be easily movable with wheels that lock.

**If you could go to dinner with a designer, who would you go with?**  
I have never idolized someone so much but if I could hangout with a design team, it would be the team behind Teenage Engineering.

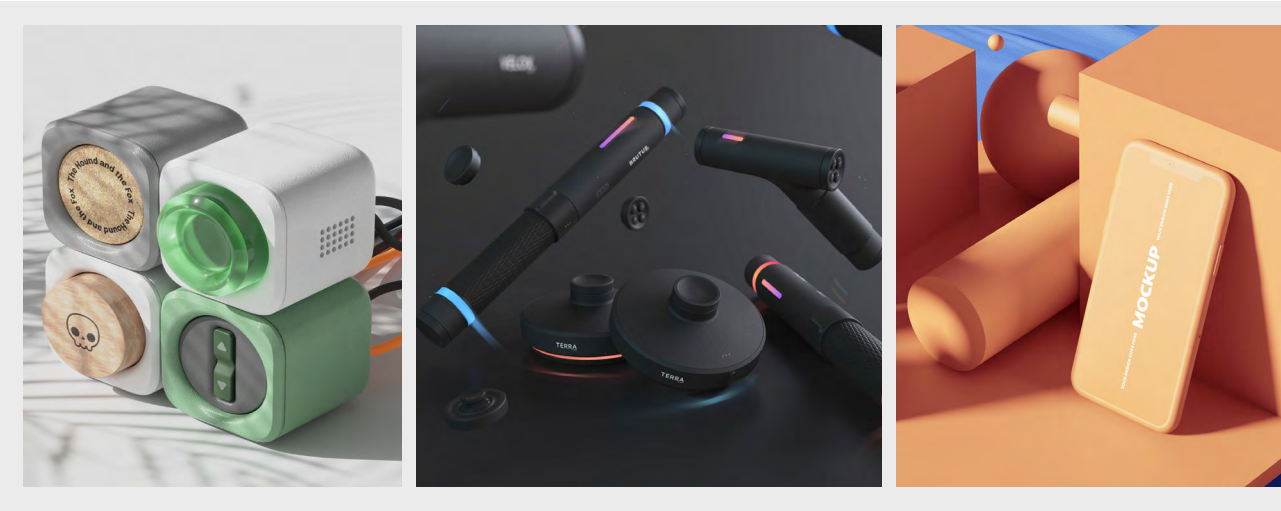
**In what influential period of design would you like to be born?**  
I am excited to exist in today's times and believe that in the last two decades design has become influential in fashion, technology, healthcare and aerospace more than ever. Additionally with the rise of new technology and ideas, it is important for design and designers to shape a healthy living culture with a heavy emphasis on wellness.

**What is your favorite conversation topic?** Cultural similarities and diversity has always been interesting to me. Being a foreigner in the US and having worked in different parts of the world previously, I am constantly observing how life is so nuanced but at the same time so similar for people from different parts of the world. I am lucky to have traveled to places and immerse myself in different cultures to feel more grounded and aware. So travel, culture and behaviour is always a solid topic to talk about.

**What is the last book you have read?**  
The Elephant in the Brain.

## What do you value most in the design of a furniture wheel?

*It should be robust, reliable and potentially have an element of fun to them, so a color pop maybe?*



**Would you prefer to travel to the future or to the past?** The past. I'd like to be present in an era when life was simpler, technology didn't solve everything and survival was deeply rooted in culture and human connection. As a designer, I find it fascinating to learn how inventions came about during a time when things weren't automated and versatile materials like plastic didn't have a commercial pipeline.

**Can you tell an anecdote about any of your projects?** One of my favourite projects was a set of gaming controllers done in college. I enjoyed gaming but never ventured into the world of hardcore gamers, so a big part of my research was speaking to gamers to find some opportunities to innovate. The project ended up being a success and my work was picked up by multiple blogs. That interestingly positioned me as an Industrial Designer in the gaming world and I was reached by many small businesses to help develop their gamer focussed product. My first large scale freelance project was a gaming headset and a couple years later I found myself getting an opportunity at a design consultancy with their feet deep into gaming. I have never considered myself an expert on gaming but that project changed a lot for me.

**Do you have any favorite material to work with?** I like the rawness of metals like aluminum and alloys like steel. I am particularly fascinated by sheet metal forming and how a simple process can create an iconic structure. Metal feels nice to hold and has a feeling of durability and premiumness to it. On the other hand, I really enjoy incorporating wood in my work. Every piece of wood is truly unique in character and creates a warm, natural and welcoming atmosphere around it when used correctly.

**What is the best memory of your childhood?** When I was a kid I would travel a lot with my family. We had a small hatchback Maruti 800 car with a luggage carrier on top. We would fully load it up to travel to different places. The car did not have an AC or a sound system so those trips would force me and my parents to talk, play games and just be fully absorbed in the journey. I miss those long Indian roads surrounded by trees in our small car.

**What is the rarest object in your room?**  
I am not there yet but I am working on building a unique/rare whiskey collection.

**What could we find in your garbage basket?** A lot of sketches and doodles that were never more than ink on paper.

**Which of your designs would you choose to survive a zombie attack?**  
Very likely a lighting concept called Capsule that I am working on. Or possibly a gaming controller from my EXEO project so I can smack them in the face.

**What do you currently think of your first design?** Absolutely terrible. Earlier in my academic years, I was an incredibly poor thinker and an even worse story teller. So I couldn't even market my bad ideas, nor was I able to come up with good ideas. Over the years it has become a bit better haha.

**If you were to write a book, what name would you give it?**I don't know if I can ever write a book but if I did it would be called "Why the design process needs to slow down"

Discover their projects  
了解更多他的设计



问题的终结者，能快速、灵活掌握新技能，渴望向他人学习，拥有不同领域、不同公司，如美国 Astro Studios，香港Steelcase，奥地利KISKA GmbH，印度Godrej的设计经验，这就是印度工业设计师苏珊·沃拉。

在设计的时候，你希望自己能拥有怎样的超能力呢？结合实际及用户的研究后，很多设计师会靠直觉来想出未来的解决方案，因此基于对未来的窥探，我想拥有能控制直觉及想象力的超能力来保证设计的成功率。

如果像美剧《行尸走肉》的时代来临了，你会选择自己的哪一款作品幸存呢？很可能是我正在研究的一个名叫 Capsule 的照明概念设计。又或者是来自我EXEO项目中的游戏机控制器，这样我就可以袭击僵尸们的脸了。

如果你有幸运和一位梦寐以求的设计师共享晚餐，你会选择谁呢？我没有特别崇拜谁，但如果可以选择一个设计团队的话，我会选择Teenage Engineering背后的团队。

如果能进行时空穿梭，你是想去未来还是想回到过去？过去。我想出现在一个生活更简单、技术不能解决一切、生存需要深深植根于文化及人际关系的年代。当还没出现自动化、还没出现像塑料一样的多功能材料、还没出现商业管道时，了解发明是如何产生的，作为一个设计师，我觉得这非常有趣。

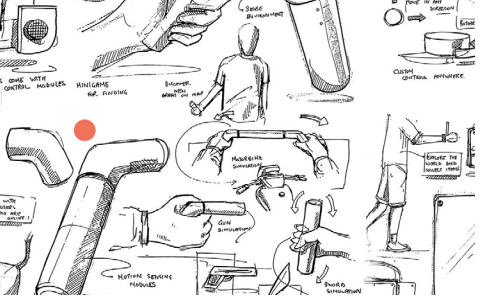
你想出生在哪个对设计有影响的年代？我很高兴自己能活在当下，我相信在过去的二十年里，设计在时尚、技术、医疗保健和航空航天领域的影响力比以往任何时候都要大。另外，随着新技术、新概念的兴起，对于设计和设计师来说，塑造以健康为重点的生活文化非常重要。

说说你设计项目中一件比较印象深刻的事情吧  
我最喜欢的设计项目之一是我在大学期间完成的一组游戏机控制器，我喜欢电玩，但从未涉足过硬核玩家的世界，因此设计调研中的大部分都是我和游戏玩家的交谈以寻找机会来进行创新，该项目最终取得了成功，而我的工作也被多个博客所记录。非常有趣，就这样我被定位为游戏界的工业设计师，而且很多小企业联系我，希望我能帮助他们开发以游戏玩家为中心的产品。我的第一个大型自由职业者项目是游戏耳机，几年后，我在一家有涉足到游戏领域的设计咨询公司获得了机会。我从没认为自己是游戏方面的专家，但这个项目改变了我。

如果你要写一本书，那这本书的书名是什么呢？我不知道自己是否能写一本书，但如果可以的话，书名会是《为什么设计的过程需要慢下来》。

在家具脚轮设计方面，你最重视什么？  
家具脚轮应该是安全可靠的，脚轮里还要有一些潜在有趣的因素，可能是流行的颜色？

如果你要设计一个带脚轮的家具，你会设计什么呢？  
作为一名乐手，我经常看到我的那位鼓手朋友在打开或收拾装备时很吃力，所以如果能在架子鼓装备上使用带刹车的脚轮会更好。



设计时你最喜欢用金属和木的材料，这是为什么呢？我喜欢金属的粗狂，像铝、像锌合金、像铁。我对金属板材成型、对金属经过简单的加工过程便能制造出一个又一个标志性的结构着迷，而且金属的触感很好，能给人带来一种耐用、优质的感觉。另一方面，我也很喜欢在我的作品里加入木元素。每一块木都是独一无二的，如果使用得当，木能营造出自然又温馨的氛围。

你最近读过哪本书？《大脑里的大象》。

我们能够在你的垃圾篓里面找到什么？  
很多草图和涂鸦，不过这些草图和涂鸦也不过是纸上的墨水而已。

你童年最美好的回忆是什么呢？当我还是个小孩子的时候，我经常和家人一起旅行。我们有一辆Maruti 800的小型掀背车，车的顶部有一个行李架，我们会把行李架装满来去不同的地方。那辆车没有空调、没有音响系统，这迫使我在旅行期间要和父母说话、玩游戏、全神贯注于旅程，我想念在那辆小车上看到的被树木环绕的印度长路。

你房间里最奇怪的东西是什么？我还没回到房间呢，不过我在努力地弄一个独特的威士忌系列在房间。

现在你怎么看自己的第一件设计呢？  
十分可怕。早期在校期间，我是一个难以置信的、思维极度贫瘠的人，更糟糕的是我的表述能力比我的思维还要糟糕，所以我无法推销自己的糟糕主义，也无法想出好主意。几年过去了，我感觉现在好了一点点，哈哈。

你最喜欢谈什么话题？我一直对文化的相似性和多样性很感兴趣。作为一个在美国的外国人，加上曾在世界不同地方工作过的经历，我一直在观察不同地方的人生活的微妙不同，但与此同时又是如此相似。我很幸运能到不同的地方旅行，让自己能沉浸在不同的文化中，从而感受更多、意识更多。所以旅行、文化和行为总是一个值得讨论的话题。

在家具脚轮设计方面，你最重视什么？  
家具脚轮应该是安全可靠的，脚轮里还要有一些潜在有趣的因素，可能是流行的颜色？

如果你要设计一个带脚轮的家具，你会设计什么呢？  
作为一名乐手，我经常看到我的那位鼓手朋友在打开或收拾装备时很吃力，所以如果能在架子鼓装备上使用带刹车的脚轮会更好。





## 5 KOO INSPIRATIONS

5大原因向你炫酷

Nowadays we are constantly exposed to images that inspire us to create design and decoration spaces. We show you 5 inspirations from the Koo Family.

5大原因向你炫酷，启发你的空间装饰设计。

### INSPIRE FREEDOM

Feel the freedom and movement of having a Koo roll on your furniture.

自由

脚轮内含精密轴承，外带PU软包边，让你畅享静音自由转动。



### INSPIRE SAFETY

A quality wheel, which has gone through different test to offer the best performance.

安全

EN12528、Clause 16 of ANSI/BIFMA X5.1-2017.....不同的国际标准、反反复复的检测成就高质、安全的炫酷一族。



### INSPIRE CONFIDENCE

At the office, we want our entire team of work is trustworthy and works perfectly.

可靠

与“空洞”的外观所不符的是其强大的承重，是其齐全的尺寸，从家居到办公、从装饰设计到医疗辅助.....处处是其可靠的足迹。

### INSPIRE DESIGN

Designed by José Vinaroz, who has created our highest range of wheels.

设计

西班牙著名设计师何塞·维纳罗斯得意之作，打破传统脚轮中轴设计，“洞”见未来，引领潮流。



### INSPIRE FRIENDSHIP

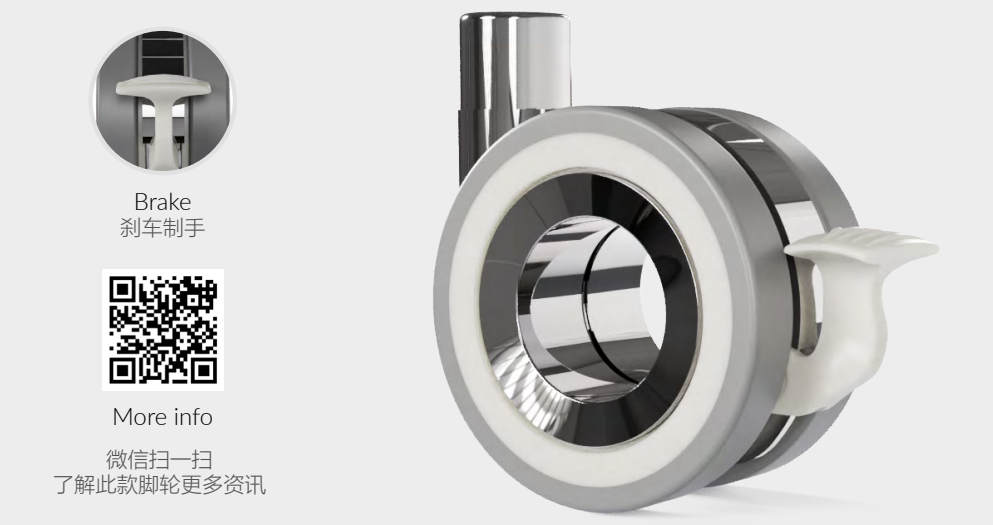
A wheel pleasing to the eye that generates us good feelings, like a friend.

环保

脚轮从设计到制造过程均符合最新版欧盟电子电器产品有害物质禁用指令RoHS2.0。——环保，贯穿整个过程。









Brake  
刹车制手



More info  
微信扫一扫  
了解此款脚轮更多资讯

KOO 75 酷75mm

AVAILABLE COLOURS 常规颜色



**CHARACTERISTICS** **Material:** Chassis made of Zamak and polyurethane Shore 95° tread. Two bearings for continuous and smooth movement. Silent, don't mark the floor. **Couplings:** 47x47 plate, 11x22 pin, M8x15 and M10x15 metric pin. **Patented system:** Silence system

**技术数据** **材料:** 锌合金支架, 95° PU包边, 内含精密轴承, 享受静音转动  
**配件:** 平底47X47mm、插杆φ11X22mm、丝头M8X15mm或M10X15mm.

**测试标准:** EN12528 / Clause 16 of ANSI/BIFMA X5.1-2017

Diameter 直径	75mm	Load 动态承重	85kg
Width 轮宽	42mm	Shore 包边硬度	95°
High 总高	93.5mm	Brake 可选刹车	Yes

Concept by José Vinaroz, creative by Robby team 2007  
何塞·维纳罗斯概念, 诺贝团队2007年创造

**KOO 75**

There are many ways to facilitate day by day, and if you are one of those who prefer to move effortlessly heavy furniture to be able to have different options when distributing a space or simply so that the time to clean be something quick and easy, then we recommend our KOO 75, a faithful and strong wheel with a beautiful design that will remain luxury in your living room.

*Home has to be a space comfortable and ready to enjoy.*

**酷75**

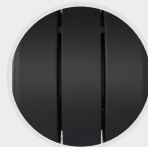
时尚家居风格多种  
便利家居方式多样  
然而要同时拥有  
总少不了酷75

脚轮线条、色彩分明  
不繁中更显不凡



HOME  
家居





Front view  
正视图



Koo 65  
微信扫一扫  
了解酷 65 更多资讯



Koo Evo 65  
微信扫一扫  
了解酷 65 II 更多资讯



## KOO 65 酷65mm

AVAILABLE COLOURS 常规颜色



**CHARACTERISTICS** **Material:** Chassis made of poliamida and polyurethane. 100% reciclables, silent, don't mark the floor. **Couplings:** 47x47 plate, 11x22 pin, and M8x15 and M10x15 metric pin. **Patented system:** Silence system

**技术数据 材料:** PA支架, 95° PU包边, 环保材质制造, 内含精密轴承, 享受静音转动

**配件:** 平底47X47mm、插杆 φ 11X22mm、丝头M8X15mm或M10X15mm.

**测试标准:** EN12528 / Clause 16 of ANSI/BIFMA X5.1-2017

Diameter 直径	65mm	Load 动态承重	60kg
Width 轮宽	43mm   51,5mm (Koo65II)	Shore 包边硬度	95°
High 总高	72,5mm   70,5mm (Koo65II)	Brake 可选刹车	Yes
	72,5mm (Koo65II, autobrake)		

Concept by José Vinaroz, creative by Robby team 2011

何塞·维纳罗斯概念, 诺贝团队2011年创造

## KOO 65

In any profession, it is necessary to have the necessary inputs to be able to offer good performance and exercise perfectly. This implies both the work climate, the comfort, and the practicality of each object. The main element of a job that requires many hours on the computer is the office chair, it is important to make sure you have a good ergonomic chair, with safe and fluid movement. Koo65 is our star wheel for office chairs.

*A pleasant workspace allows great things to happen.*

## 酷65

办公氛围一成不变?  
办公环境千篇一律?  
也许条条框框的刻板印象  
需要曲线来打破  
沉闷的一切需要移动来调剂  
同心圆中空设计的酷65  
能通过调节底部滑块  
在同一脚轮里实现无刹车  
或无承重刹车的功能

活跃气氛、提高效率  
酷65已准备就绪!



OFFICE  
办公

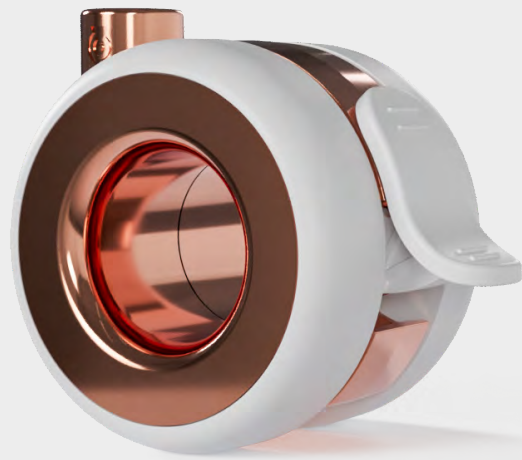




Front view  
正视图



More info  
微信扫一扫  
了解此款脚轮更多资讯



## KOO 60 酷60mm

AVAILABLE COLOURS 常规颜色



**CHARACTERISTICS** **Material:** Chassis made of zamak and polyurethane. 100% recyclables, silent, don't mark the floor. **Couplings:** 47x47 plate, 11x22 pin, M8x15 and M10x15 metric pin. **Patented system:** Silence system.

**材料:** 锌合金支架, 95° PU包边, 环保材质制造, 内含精密轴承, 享受静音转动

**配件:** 平底47X47mm、插杆 φ 11X22mm、丝头M8X15mm或M10X15mm.

**测试标准:** EN12528 / Clause 16 of ANSI/BIFMA X5.1-2017

|Diameter 直径 60mm

|Width 轮宽 46mm

|High 总高 65mm

|Load 动态承重 60kg

|Shore 包边硬度 95°

|Brake 可选刹车 Yes

Concept by José Vinaroz, creative by Robby team 2019

何塞·维纳罗斯概念, 诺贝团队2019年创造

## KOO 60

The latest designer wheel was born from our series KOO to expand the variety of sizes and thus satisfy and meet all the needs of our customers. The design is as important to us as its quality and its perfect Bearing. Available with or without brake and in different colors. If you value design and want to have mobility in your furniture, without any doubt this wheel is for you.

*A clean, tidy, and decorated workspace gives many benefits.*

## 酷60

60mm的脚轮直径为电动升降桌带来了合适的高度及移动的概念。走心的空心设计为平平无奇的升降桌引入时尚元素。

不知不觉“酷60”带来了意想不到的改变。皆因移动令共享变得容易。



COWORKING  
共享办公





KOO 100  
酷100



KOOEVO 75  
酷75-2



KOO 75  
酷75



KOO 65  
酷65



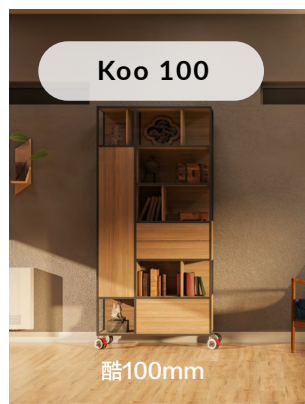
KOO 60  
酷60







凭着独特的工艺和设计  
改变世界对中国  
产品的不良印象



**PROUD  
TO BE  
MADE IN  
CHINA**  
为中国智造自豪

本公司保证所有销售或提供给客户的产品，其设计及制造过程均符合最新版欧盟电子电器  
产品危害物质禁用指令RoHS2.0.



关注我们



网 址



中国广东省中山市小榄镇绩东一龙胜工业区龙胜路 2 号

0760-22612300

sales@robbycasters.com | robby520@vip.163.com

www.robby.com.cn

@robbycasters

Facebook

Instagram

Pinterest

Linkedin

Youtube

Navigation site

Products

Interviews

Catalogue

Corporate video

News

Contact us

No.2 Longsheng Road Longsheng Ind. Zone Xiaolan  
Town Zhongshan City Guangdong province China.  
(Post code: 528415)

0760-22612300

sales@robbycasters.com | robby520@vip.163.com

www.robby.com.cn